

# MONTHLY MEMBERSHIP PROGRESS REPORT

LOCATION OKLAHOMA

District 3 SW

Results as of: 6/30/2023

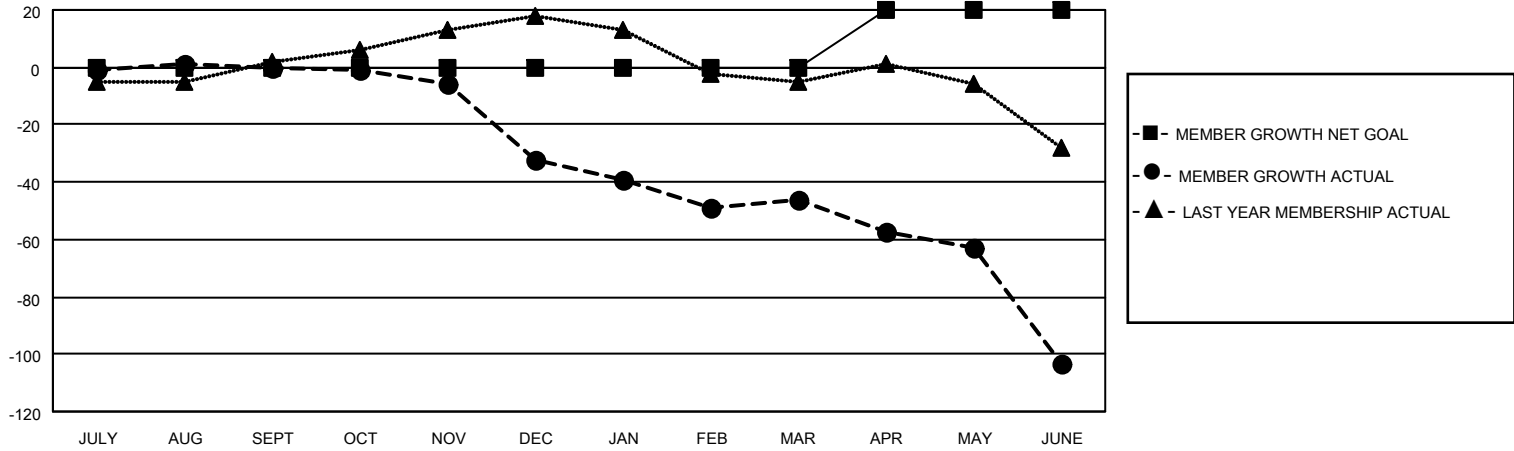
Clubs			
RESULTS FOR 2022-2023			
QUARTER	NEW CLUB GOAL	NEW CLUBS	DROPPED CLUBS
JULY/AUG/SEPT	0	0	1
OCT/NOV/DEC	0	0	1
JAN/FEB/MAR	0	0	0
APR/MAY/JUNE	1	0	1

Members			
RESULTS FOR 2022-2023			
QUARTER	MEMBER GROWTH NET GOAL	MEMBER GROWTH ACTUAL	DROPPED MEMBERS ACTUAL (including transfers)
JULY/AUG/SEPT	0	33	32
OCT/NOV/DEC	0	13	44
JAN/FEB/MAR	0	31	28
APR/MAY/JUNE	20	23	77

**GOALS AND ACTUAL NEW CLUBS CUMULATIVE**



**GOALS AND ACTUAL MEMBERS CUMULATIVE**



DROPPED CLUBS: 3	
<u>DROPPED MEMBERS</u>	
DECEASED	14
CLUB CANCELLED	32
OTHER	135
<b>TOTAL</b>	<b>181</b>

26 CLUBS OF 55 ADDED 1 OR MORE NEW MEMBERS

[CLICK HERE FOR CUMULATIVE MEMBERSHIP DATA](#)

<u>GENDER DISTRIBUTION</u>	
MALE	651 (60.73%)
FEMALE	421 (39.27%)
NON BINARY	0 (0.00%)
PREFER NOT TO ANSWER	0 (0.00%)
TOTAL FAMILY UNIT MEMBERS	160
FAMILY MEMBERS PAYING HALF DUES	80